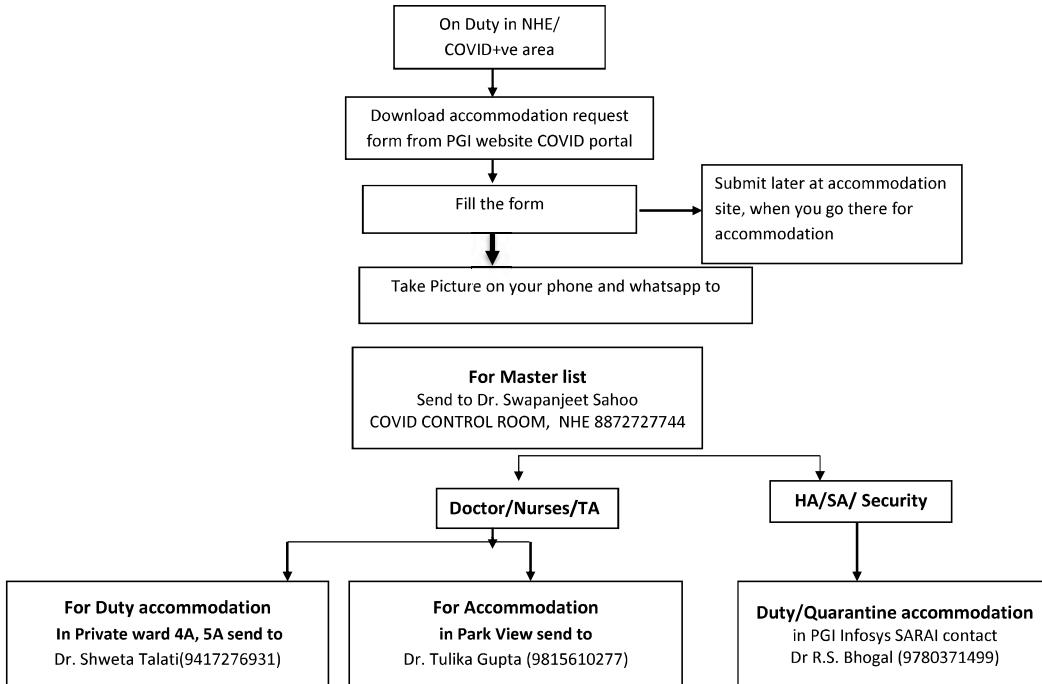
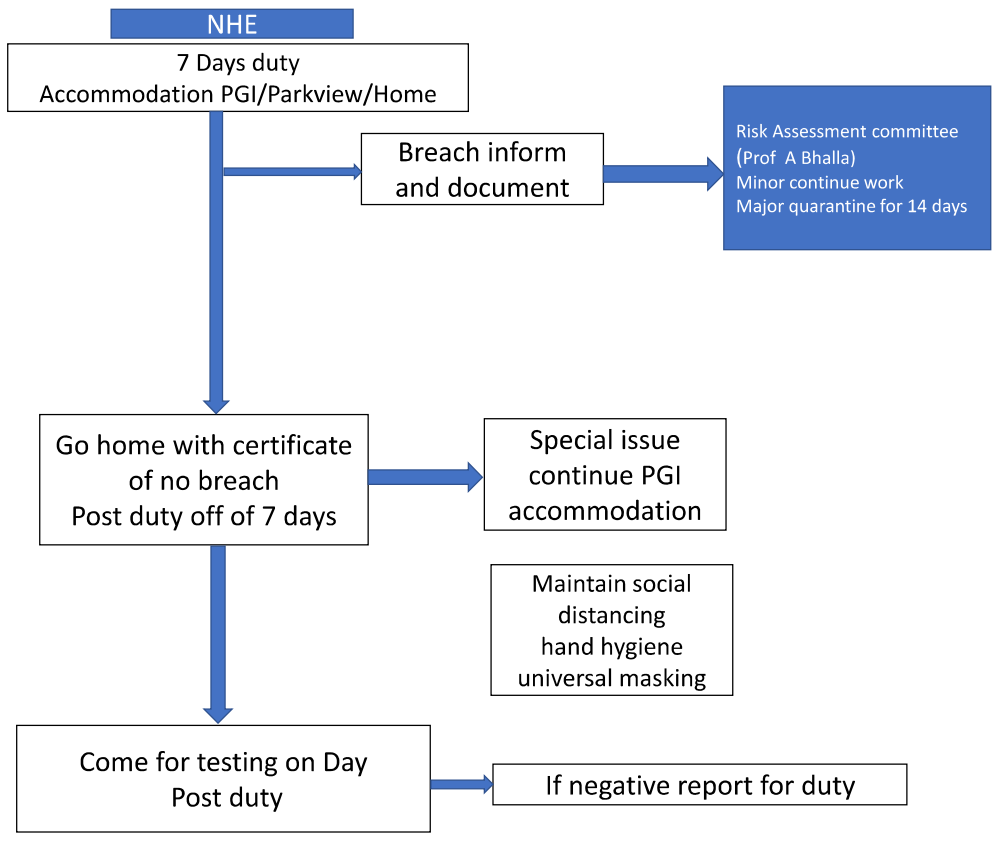
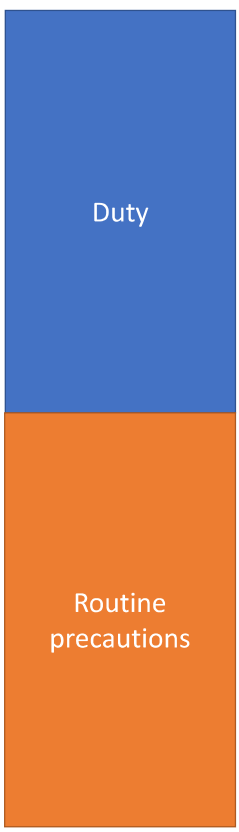


HOW TO AVAIL PGI ACCOMMODATION FOR THOSE ON COVID +VE DUTY in NHE

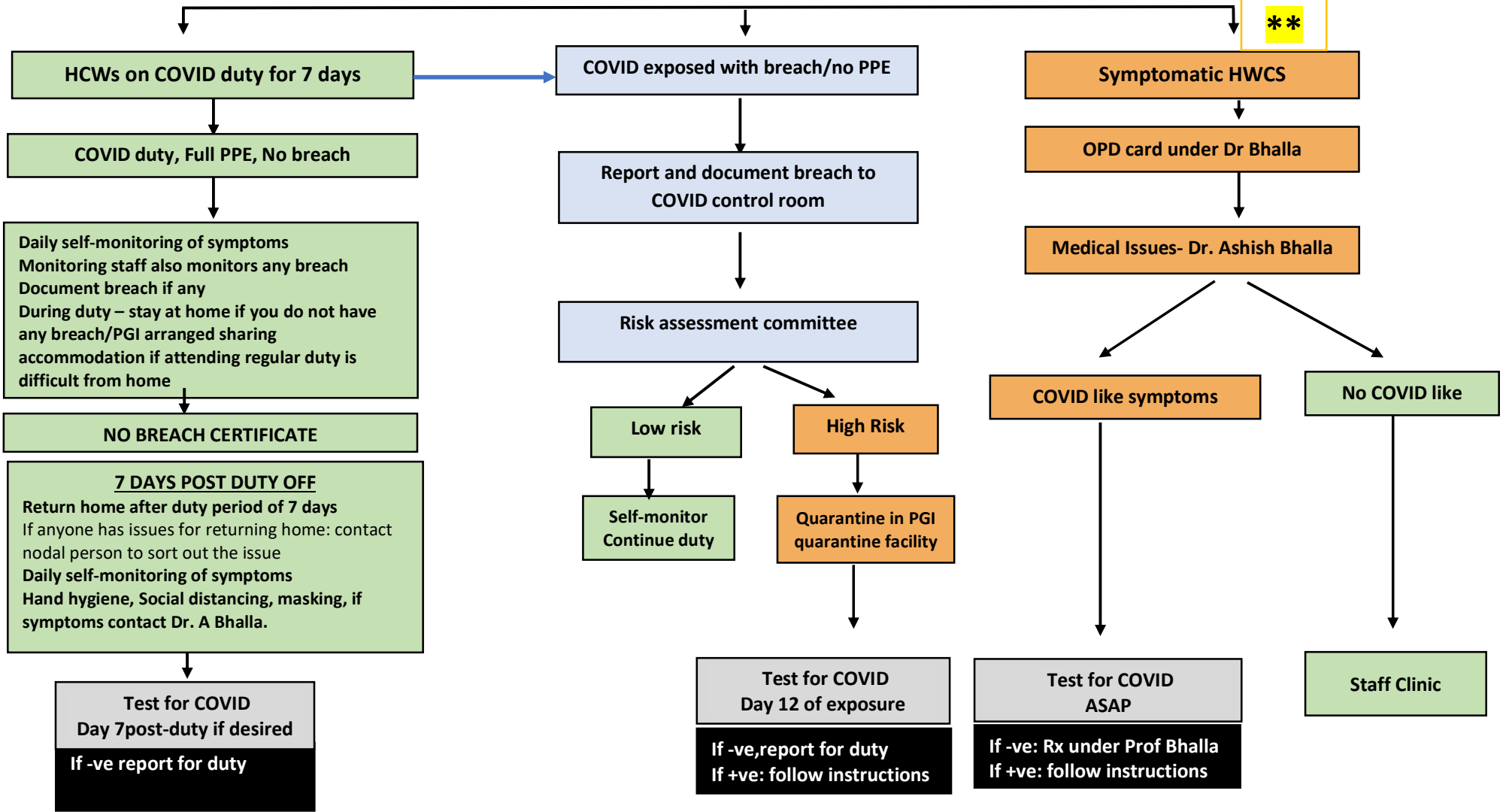


(USHA DUTTA)
Chairperson
8198877022
COVID PGI welfare Committee

- 1
- 2
- 3
- 4
- 5
- 6
- 7
- 8
- 9
- 10
- 11
- 12
- 13
- 14 **Test**



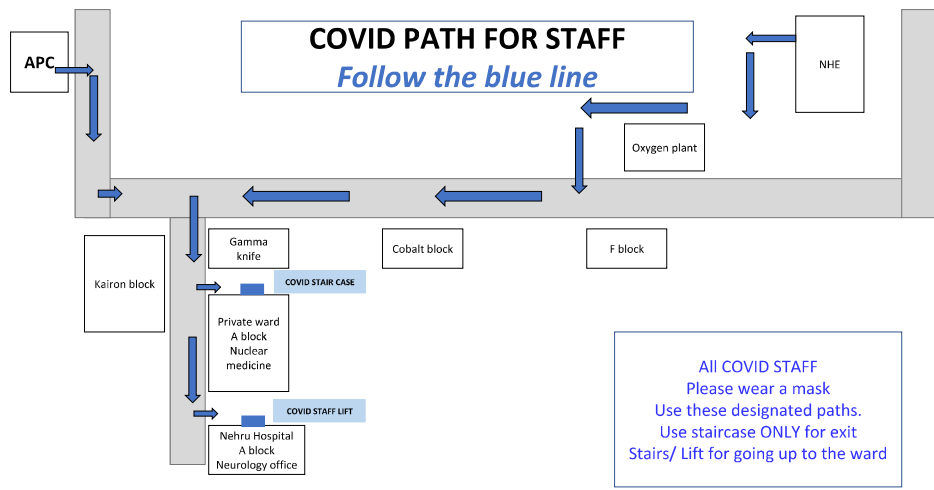
GUIDELINE FOR HEALTHCARE WORKERS DURING COVID-19 DUTY*



* All PGI healthcare workers (Regular and contractual) in area for COVID management.
 ** If symptomatic anytime follow protocol for Symptomatic HCW
 The guideline is as per present Govt. of India recommendations

COVID PATH FOR STAFF

Follow the blue line



All COVID STAFF
Please wear a mask
Use these designated paths.
Use staircase ONLY for exit
Stairs/ Lift for going up to the ward